

±1,257 RSF LIFE SCIENCE/BIOTECH SPACE  
AVAILABLE FOR LEASE

# 10179 HUENNEKENS STREET

SAN DIEGO, CA 92121  
SORRENTO MESA



**CHRIS DUNCAN, SIOR**  
Senior Vice President  
858.458.3307  
cduncan@voitco.com  
Lic. #01324067

***Voit***  
REAL ESTATE SERVICES



## PROPERTY FEATURES

- » 2-Story Lab Building
- » Elevator Served
- » Lab Space with Potential Expansion Options
- » Prime Location in Sorrento Mesa



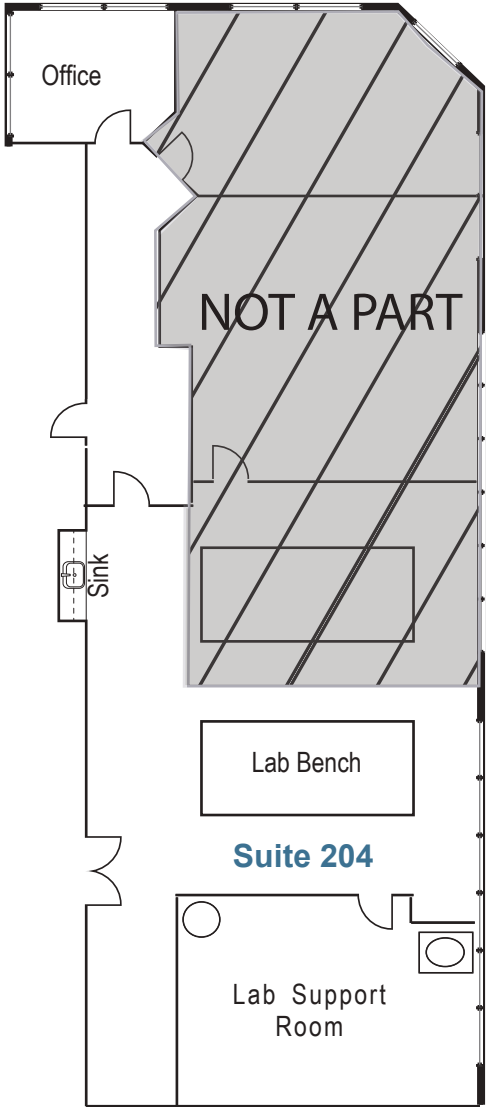
## AVAILABILITY

SUITE 204		
TOTAL RSF	LEASE RATE	STATUS
±1,257 RSF on 2nd Floor	\$3.50/SF NNN	Available Immediately

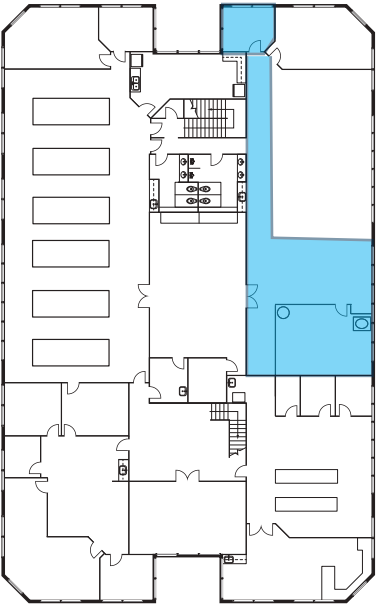


# FLOOR PLAN

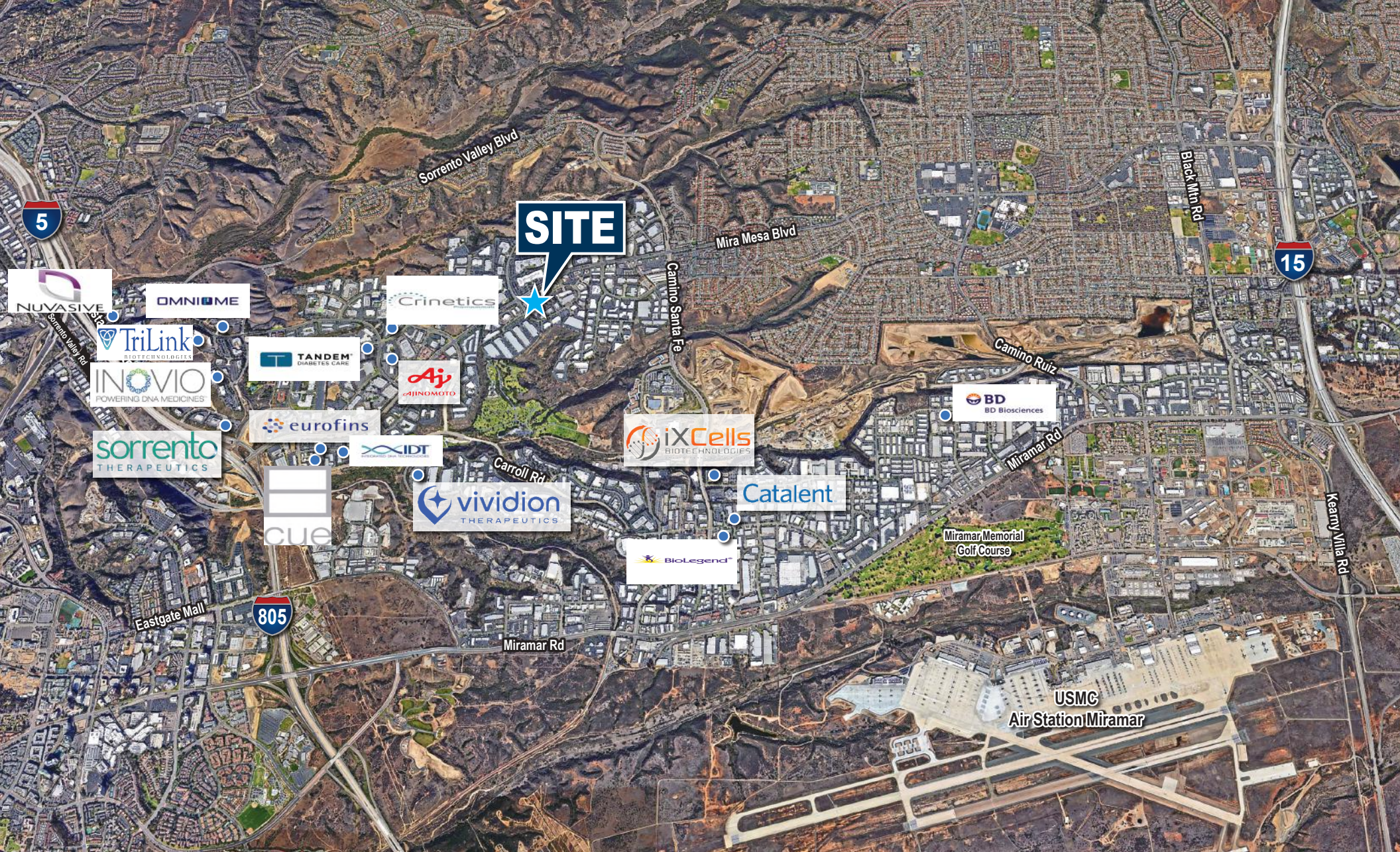
SUITE 204		
TOTAL RSF ±1,257 RSF on 2nd Floor	LEASE RATE \$3.50/SF NNN	STATUS Available Immediately
<p>COMMENTS</p> <ul style="list-style-type: none"> <li>» 10% Office / 90% Lab</li> <li>» Lab Bench</li> <li>» VCT Flooring in Lab Area</li> <li>» Shared Sink and Eyewash Station</li> <li>» Lab Support Room</li> </ul>		



# SITE PLAN







CHRIS DUNCAN, SIOR

Senior Vice President

858.458.3307 | cduncan@voitco.com | Lic. 01324067

4180 La Jolla Village Drive, Suite 100, La Jolla, CA 92037 | 858.453.0505 | 858.408.3976 F | Lic #01991785 | www.voitco.com

Licensed as a Real Estate Broker and Salesperson by the DRE. The information contained herein has been obtained from sources we deem reliable. While we have no reason to doubt its accuracy, we do not guarantee it. ©2023 Voit Real Estate Services, Inc. All Rights Reserved.

**Voit**

REAL ESTATE SERVICES